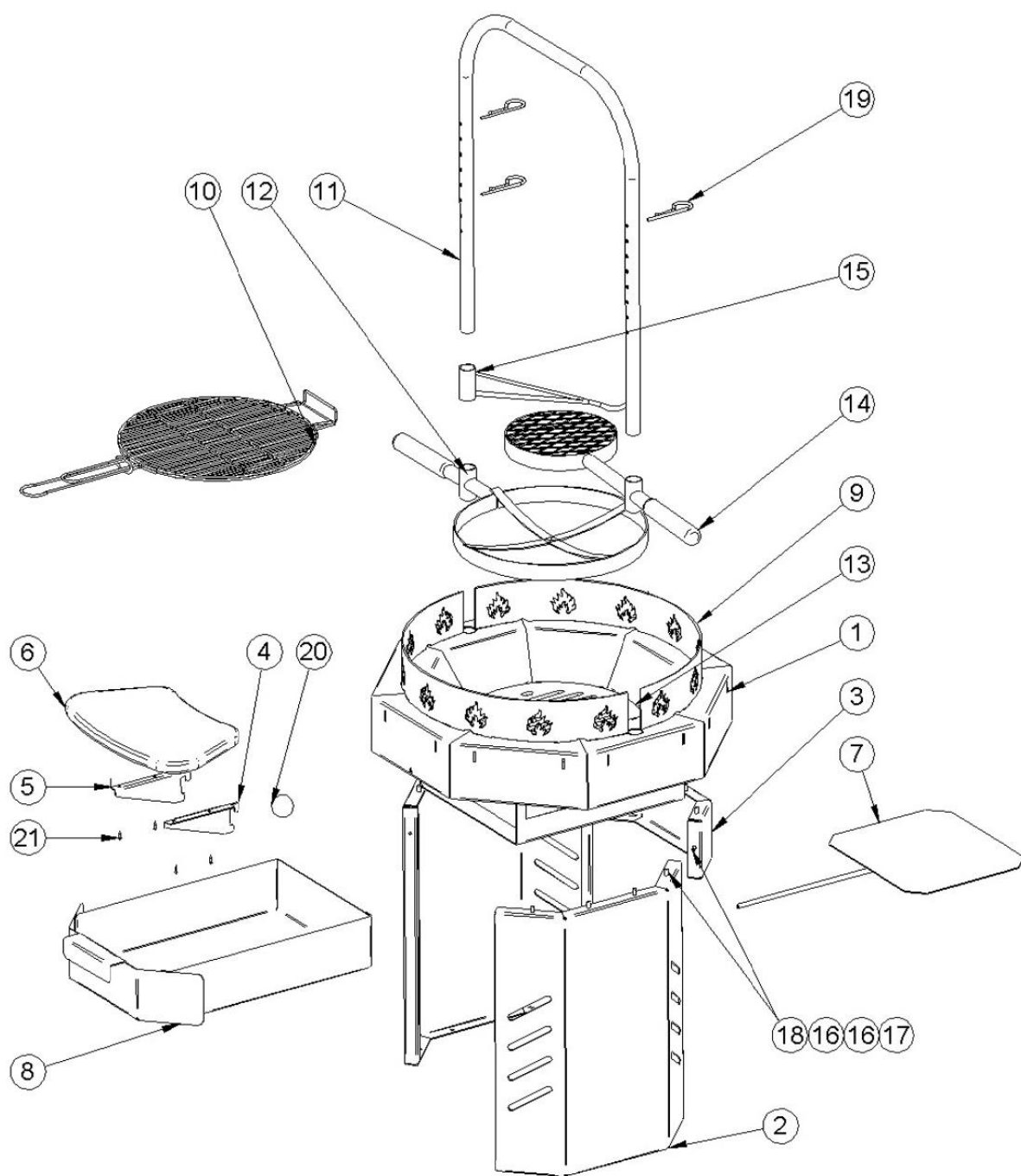


ASSEMBLY INSTRUCTIONS FOR THE BARBECUE GRILL

NB! Please follow the assembly drawings along with these instructions.

1. Remove the knob of the damper turning it counterclockwise. Remove the ash drawer (8) and damper (7) from the body of the grill.
2. Fix the legs (2) of the grill to the body (1) using four sets of nuts (17), bolts (18) and washers (16). Do not tighten the nuts all the way so the position of the legs can be adjusted after the back piece is attached.
3. Fix the back piece (3) to the body (1) and legs (2) using six sets of nuts, bolts and washers. Adjust the legs and the back piece to a good fit and tighten all the nuts.
4. Insert the damper all the way into the body of the grill. Lift the damper up onto the supporting edges and pull back towards the front so it will rest on the supporting edges. Bring the handle of the damper through the hole in the front face of the grill body. Attach the knob of the damper.
5. Insert the ash drawer (8) to the body of the grill.
6. Place the two fire guards (9) on the body of the grill so they will insert to the corresponding openings. Turn the guards slightly counterclockwise to fix them in place.
7. Place the cast iron grate (13) in the middle of the grill.
8. Insert the hook (15), small cooking tray (14) and big cooking tray (12) on to the stainless steel bend (11). Fix them in place using fixing pins (19). Insert the bend to the two holes in the grill body.
9. Attach two supports (4 and 5) to each wooden table using the wood screws (21). Mind that there are separate types of supports for left and right side of each table (please see the drawing). The holes for the screws are predrilled for ease of assembly and best fit. Check that the supports fit the openings in the grill body before tightening the screws.
10. Fix the grill to the floor through the holes in the grill legs with suitable screws or anchors (not supplied).



ASSEMBLY INSTRUCTIONS FOR THE SMOKE CATCHER

1. Place the chimney collar (3) on around the chimney pipe with pressing (2).
2. Insert the pipe with the collar into chimney opening so it will rest on the collar.
3. Put the chimney cover (4) onto the chimney and tighten with wing nut and wing bolt.
4. Attach three hook bolts into the holes in the sides of the smoke catcher so that a washer and a nut will fix it to the catcher from inside and outside. Also insert three hook screws to the ceiling of the cottage ca 1 meter from the desired position of the smoke catcher. Hang one chain (1.5 m) from every hook.
5. Put the other chimney pipe (1) onto the smoke catcher.
6. Lift the smoke catcher with the bottom chimney pipe into the upper pipe and attach the chains to the hooks on the catcher.
7. Adjust the height of the catcher with the chains.

